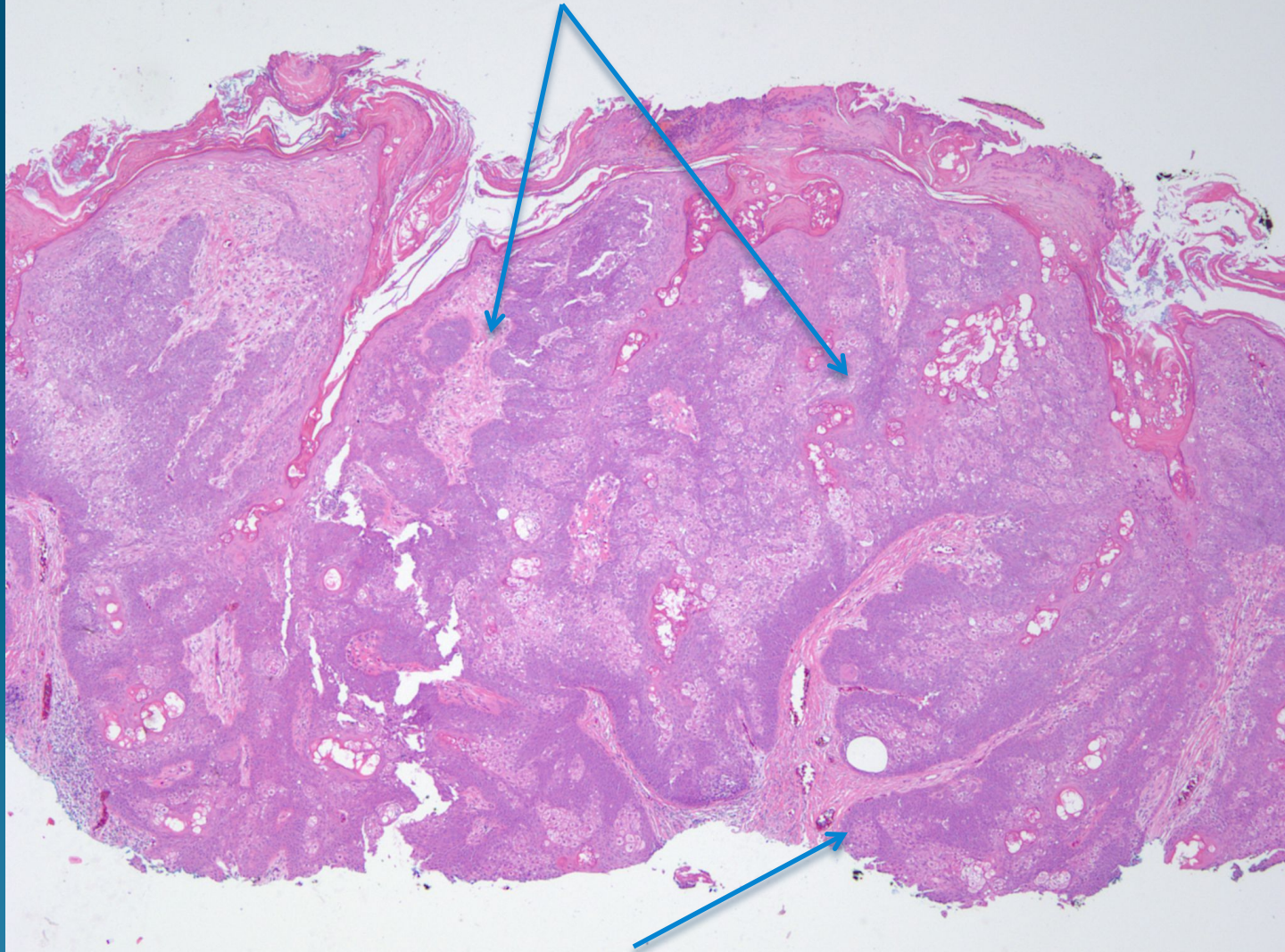


What is the best diagnosis?

- A. Trichilemmal carcinoma
- B. Trichoblastoma
- C. Keratoacanthoma
- D. Pilomatricoma
- E. Sebaceous carcinoma

Sebaceous Carcinoma

Invasive nests of squamous epithelial cells with sebocytes in
Varying stages of maturation



Cytologically malignant sebocytes and keratinocytes